

Crime Overview

October 2018

Sources:

Except where noted, all data from Metropolitan Police Service (MPS) Website and MPS AWARE System, haringey.gov.uk and covers the period August 2016 to July 2018

Performance Overview



- The Mayor's Police and Crime Plan (2017-2021) has outlined key priorities for Haringey:

Mandatory High Harm Crimes:

- Sexual Violence
- Domestic Abuse
- Child Sexual Exploitation
- Weapon-Based Crime
- Hate Crime

Mandatory Volume Crime:

- Anti-Social Behaviour

Local Priorities:

- Robbery
- Non-Domestic Violence with Injury (VWI)

- Key focus on Violence, Vulnerability and Exploitation, whilst balancing response to volume crime
- Ranking tables show Haringey in the London context (No.1 indicates best performing borough)

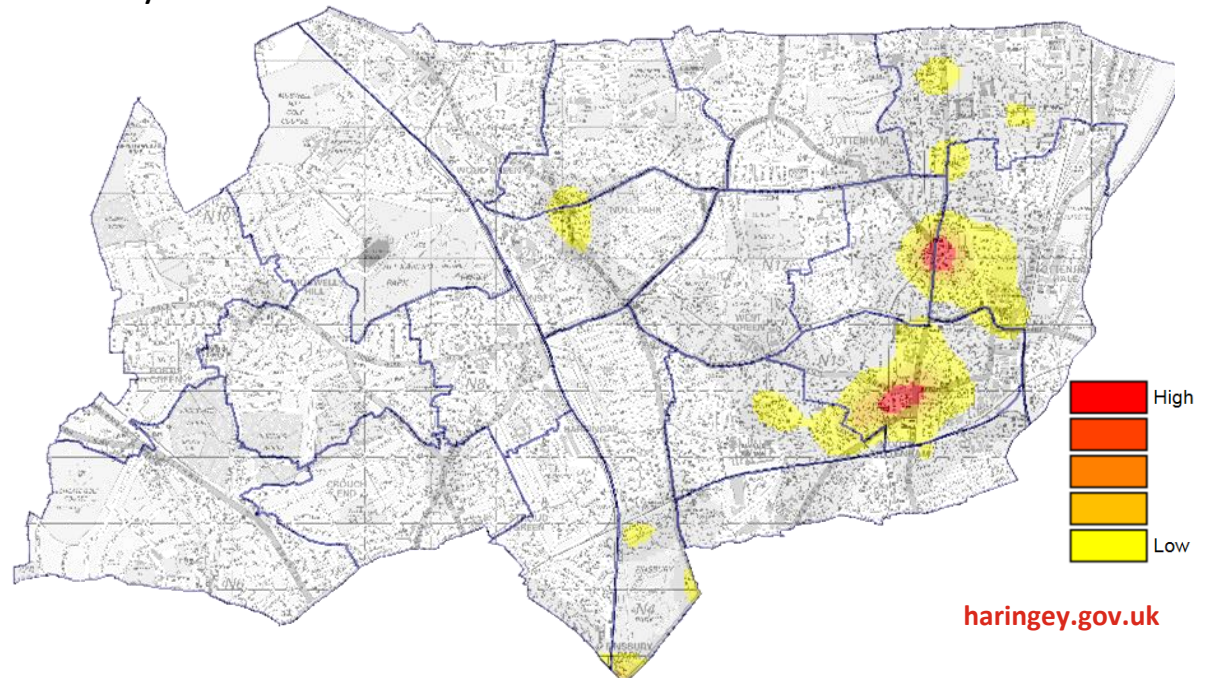
Personal Robbery

Borough	Personal Robbery	London Rank	Volume
Harrow	-19.6%	1	267
Croydon	-16.2%	2	1027
Bromley	-3.8%	3	475
Hackney	-2.9%	4	1308
Merton	8.1%	5	333
Tower Hamlets	10.0%	6	1474
Newham	11.0%	7	1910
Lewisham	11.2%	8	956
Southwark	11.9%	9	1662
Kensington and Chelsea	12.9%	10	665
Hillingdon	13.1%	11	501
Greenwich	13.3%	12	572
Enfield	15.3%	13	1058
Haringey	21.4%	14	1797
Westminster	21.7%	15	2543
Lambeth	21.9%	16	1501
Ealing	28.7%	17	826
Barnet	29.4%	18	665
Redbridge	32.0%	19	937
Bexley	32.5%	20	281
Barking and Dagenham	34.3%	21	830
Havering	38.0%	22	574
Hounslow	38.1%	23	547
Wandsworth	40.2%	24	833
Hammersmith and Fulham	41.3%	25	667
Kingston upon Thames	41.7%	26	197
Waltham Forest	44.2%	27	936
Sutton	46.2%	28	291
Islington	51.5%	29	1788
Camden	52.9%	30	1969
Brent	73.4%	31	1458
Richmond upon Thames	95.1%	32	281
London Total	22.6%		31129

Personal robbery has increased significantly in Haringey, by 21%, which is over 250 extra offences per year. London wide offending has also worsened, experiencing an increase of 23%.

Robbery of mobile phones has seen an increase of 8% in Haringey (620 in 12 months), compared to a London increase in this same category of 19%.

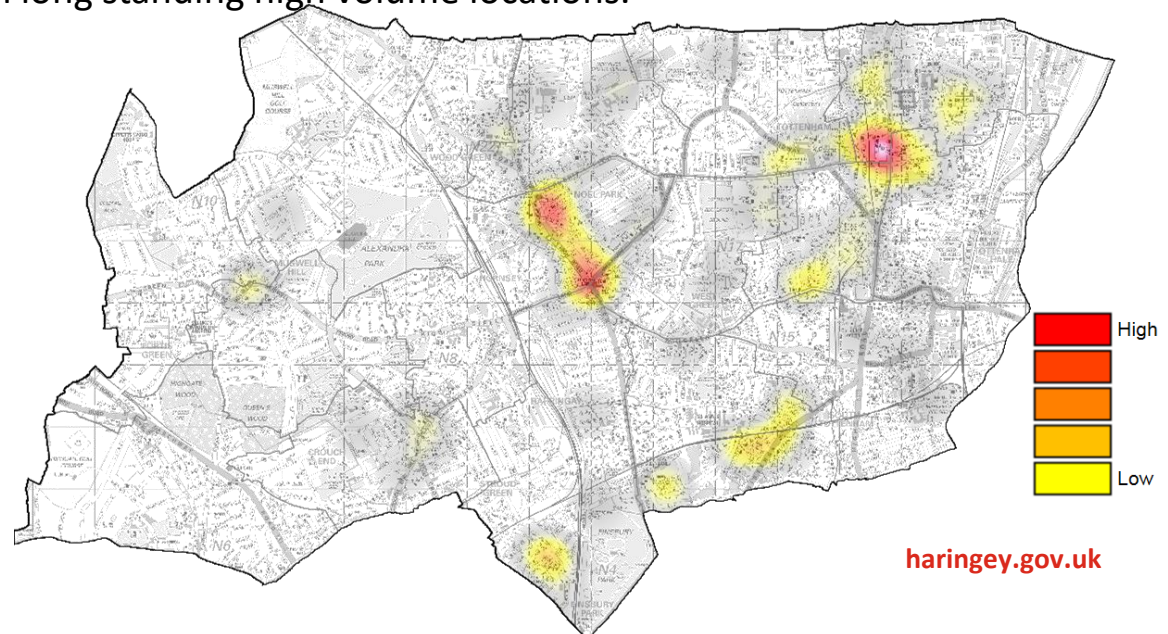
Moped enabled robbery volumes have reduced in recent months. The highest volumes have taken place in Islington, Camden and Hackney.



Knife Injury Victims

Borough	Knife Injury Victims	London Rank	Volume
Richmond upon Thames	-29.3%	1	29
Barking and Dagenham	-22.8%	2	105
Bexley	-17.2%	3	53
Sutton	-14.3%	4	48
Redbridge	-14.2%	5	127
Southwark	-13.6%	6	267
Hounslow	-13.2%	7	118
Haringey	-13.1%	8	192
Newham	-11.3%	9	220
Merton	-10.5%	10	51
Hackney	-10.1%	11	186
Barnet	-6.0%	12	109
Bromley	-5.9%	13	96
Croydon	-5.7%	14	197
Harrow	-5.7%	15	100
Islington	-5.6%	16	168
Lewisham	-4.0%	17	192
Lambeth	-1.4%	18	273
Brent	0.4%	19	231
Enfield	5.2%	20	183
Ealing	7.6%	21	169
Westminster	8.5%	22	179
Waltham Forest	8.5%	23	166
Kingston upon Thames	12.8%	24	44
Tower Hamlets	15.5%	25	246
Wandsworth	16.4%	26	128
Kensington and Chelsea	17.1%	27	96
Havering	17.4%	28	101
Camden	17.9%	29	178
Greenwich	19.2%	30	180
Hammersmith and Fulham	21.7%	31	101
Hillingdon	25.4%	32	148
London Total	-0.9%		4681

- The volume of overall knife injuries has reduced by 13% in Haringey, compared to a 1% London-wide reduction.
- Haringey has experienced a reduction in young victims of knife injuries, reducing by **-23%**. During this period, London overall has increased by 1%.
- **However, serious incidents still occur, which often lead to serious and life-changing injuries.**
- Key locations are Wood Green High Street, Turnpike Lane and Bruce Grove
- Hotspots have continued to shift, following targeted partnership work in long standing high volume locations.



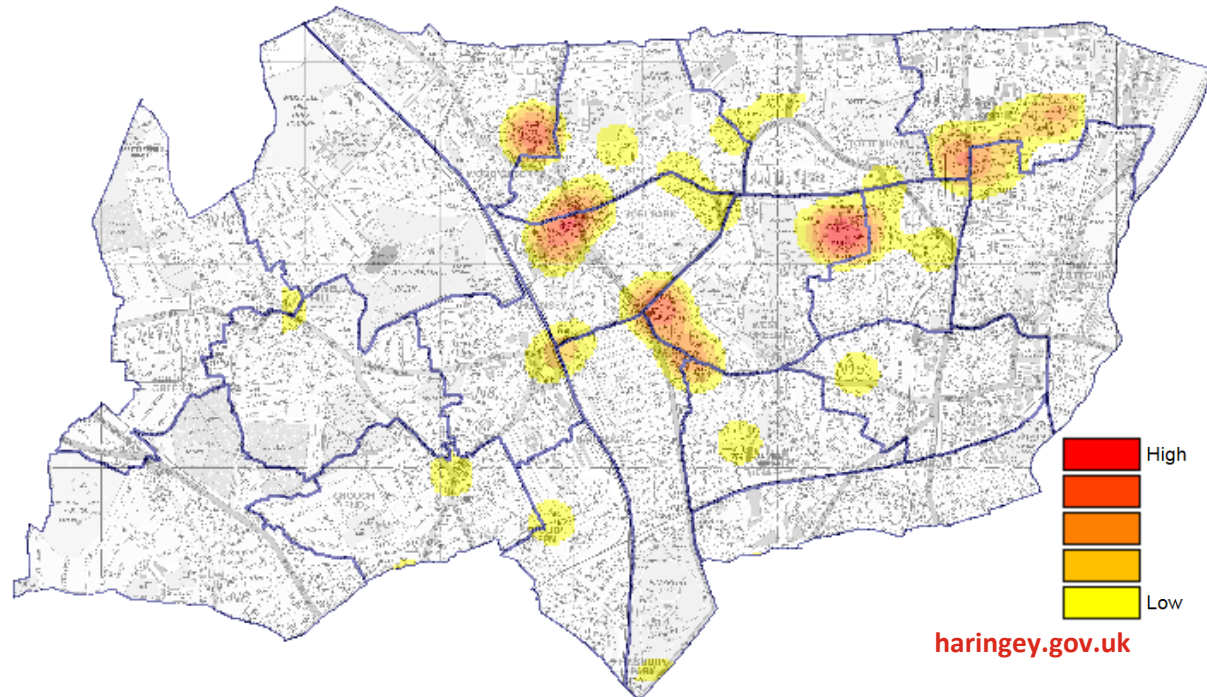
Lethal Barrelled Firearm Discharges

Borough	Lethal Barrelled Firearm Discharges	London Rank	Volume
Hammersmith and Fulham	-100.0%	1	0
Richmond upon Thames	-75.0%	2	1
Enfield	-63.6%	3	8
Hounslow	-62.5%	4	3
Redbridge	-60.0%	5	4
Kingston upon Thames	-50.0%	6	1
Camden	-41.7%	7	7
Havering	-37.5%	8	5
Westminster	-36.4%	9	7
Barnet	-33.3%	10	2
Kensington and Chelsea	-28.6%	11	5
Newham	-19.5%	12	33
Islington	-11.1%	13	8
Bromley	0.0%	14	4
Sutton	0.0%	15	3
Greenwich	10.0%	16	11
Barking and Dagenham	12.5%	17	9
Haringey	15.2%	18	38
Hackney	17.4%	19	27
Lambeth	50.0%	20	39
Wandsworth	50.0%	21	6
Croydon	63.6%	22	18
Southwark	69.2%	23	22
Waltham Forest	73.3%	24	26
Hillingdon	80.0%	25	9
Lewisham	83.3%	26	11
Tower Hamlets	85.7%	27	13
Brent	87.5%	28	30
Bexley	150.0%	29	10
Harrow	150.0%	30	10
Merton	200.0%	31	6
Ealing	250.0%	32	7
London Total	17.9%		383

■ Lethal barrelled firearm discharges in Haringey have increased year on year to August 2018 by 15%. London has increased by 18% over this same period.

■ Haringey accounts for **1 in 10** of all lethal barrelled firearm discharges in London.

■ Firearm related incidents mostly occur to the East of the borough, and show some correlation with known gang linked areas. Offences also demonstrate some geographical clustering.

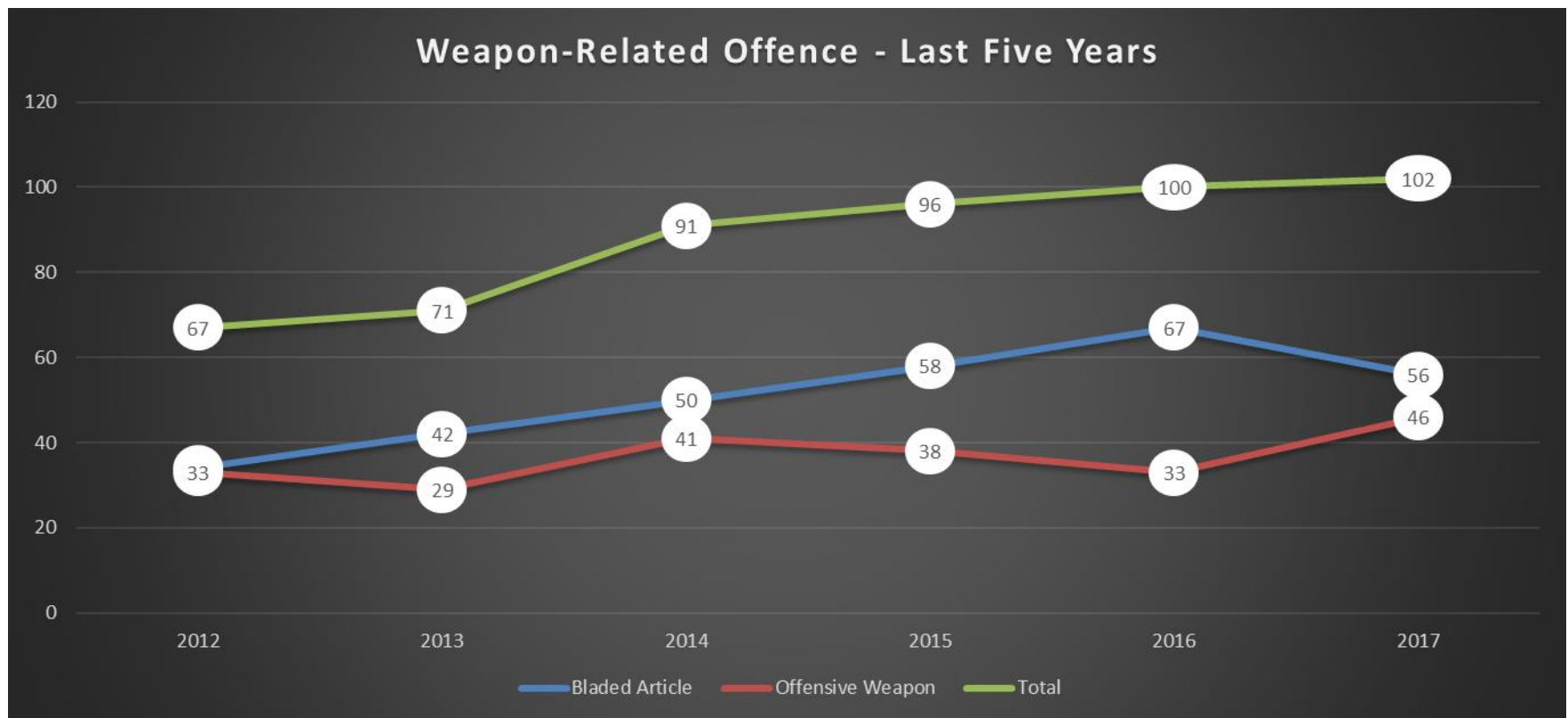


Youth Knife Crime Headlines

- 18 young people currently on YJS caseload that have been a victim of stabbing representing 17% of statutory caseload. True number is likely to be higher due to non-reporting of some crimes.
- 82% of knife crime (in 2016) was suspected to be gang-related
- There have been six deaths that have involved Haringey young people since 2016.
- 33% of YJS caseload have been arrested for knife-enabled offence.

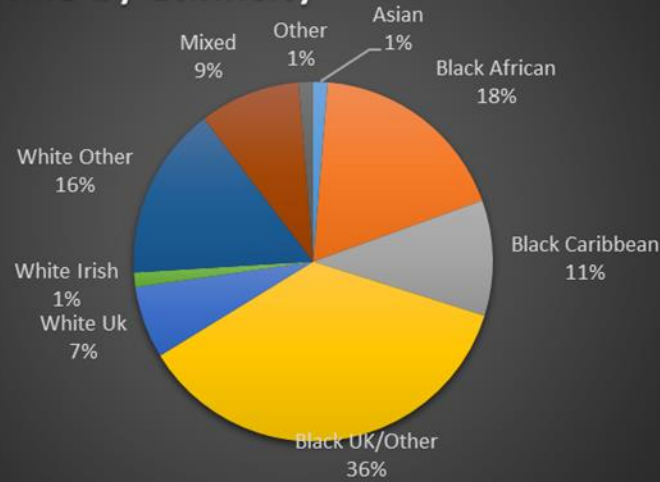
Youth Crime

The number of young people (aged 10 to 18) arrested for Weapon-enabled offences have increased every year for the last six years in an environment where numbers of young people arrested have fallen significantly over the same period.

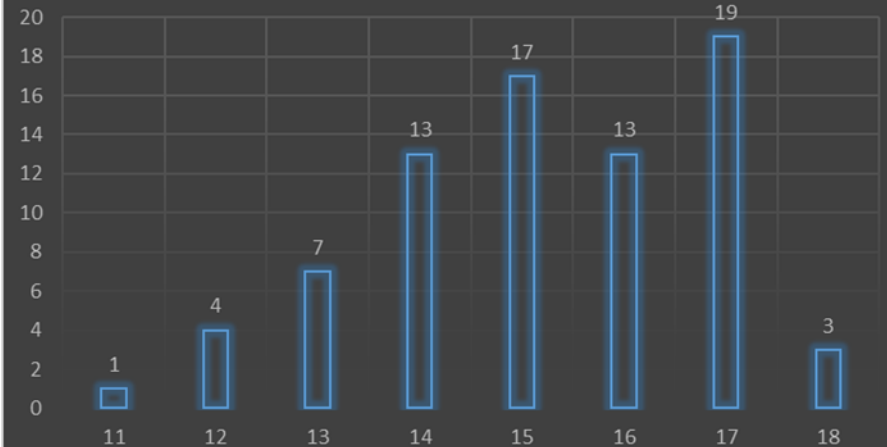


Youth Knife Crime Demographics (2016 data)

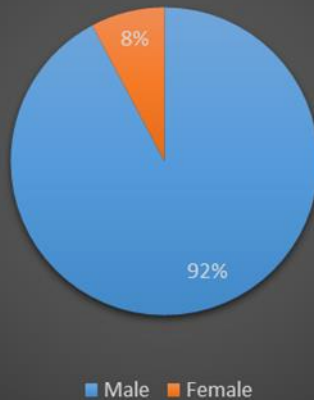
Knife Crime by Ethnicity



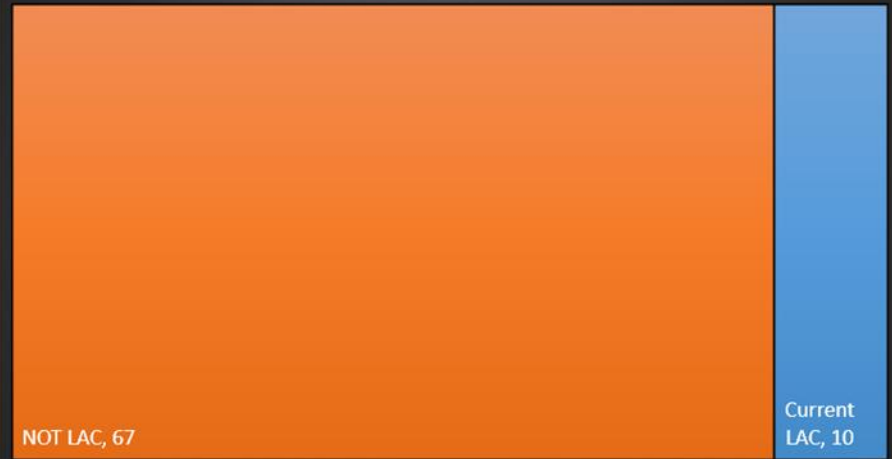
Knife Crime by Age



Knife Crime by Gender

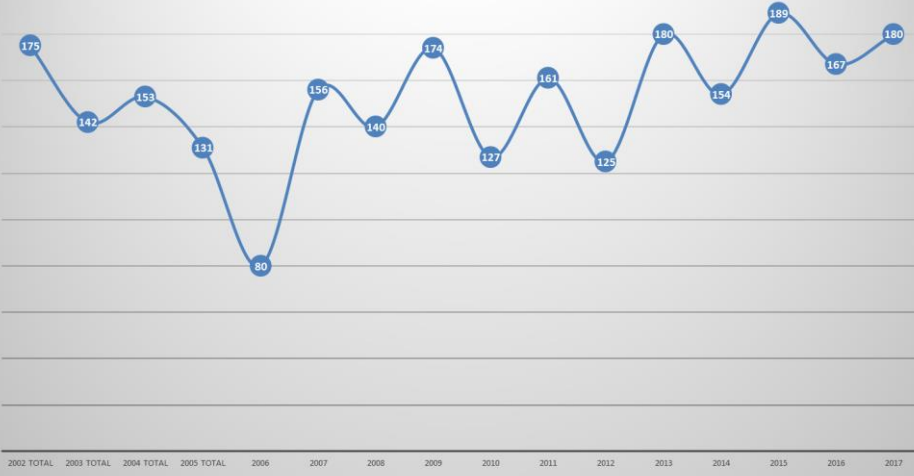


Knife Crime by LAC Status

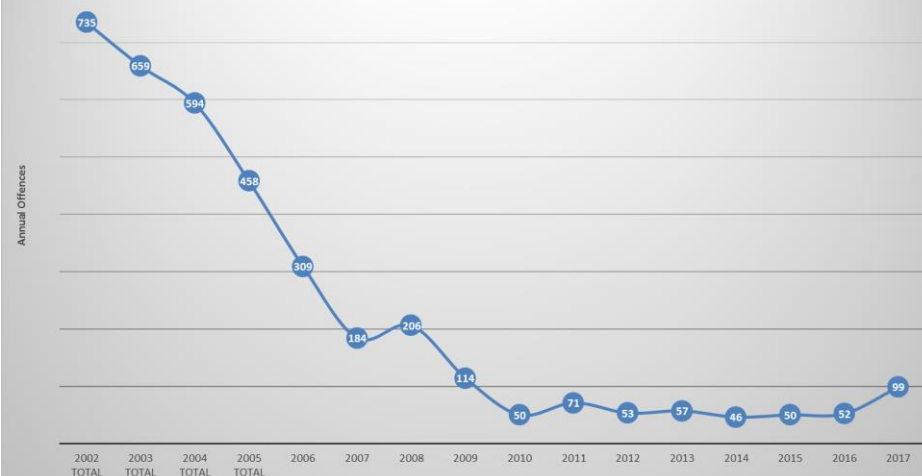


Other areas of concern – Youth offending

Drugs Offences by Year

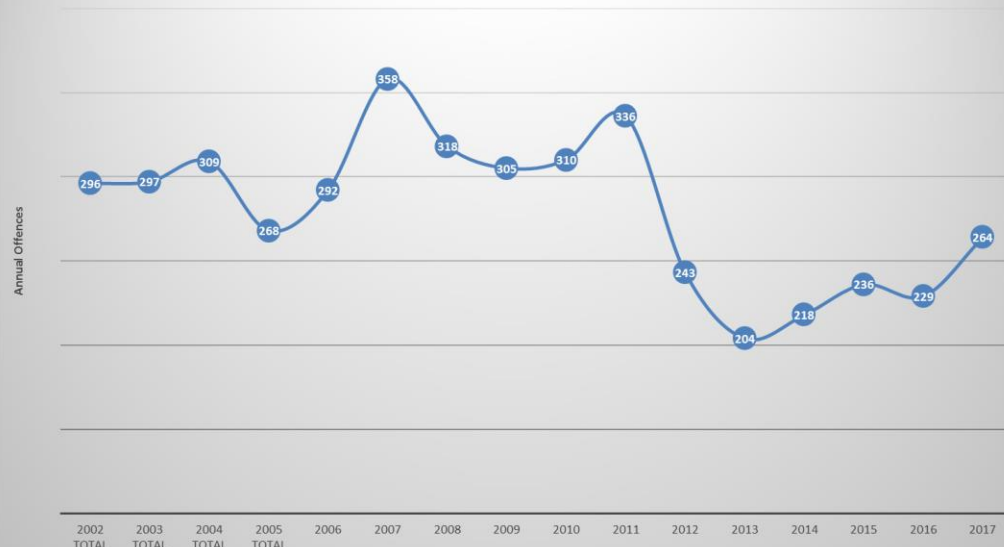


Motoring Offences Annually



Drugs, Vehicle Theft/Motoring and Violent offences increased over the last year by 8%, 74% & 15% respectively. The increase in vehicle crime can be attributed to the increase in moped crime.

Violence Against the Person Annually



Partnership Action

- Partnership Problem Solving Group (PPSG) fully established and takes place on a monthly basis to focus on deploying resources to problematic areas across the borough. Following the success of Operation Hale in Ducketts Common, a similar approach is now being taken around Northumberland Park (Op Marlin) and an evaluation of this work is ongoing.
- Operation Sceptre – Ongoing police activity including weapons sweeps & intelligence led stop and search to target habitual knife carriers. Regular operations focussing on known habitual knife carriers and planned weapons sweeps.
- Operation Venice – Focussed Met wide work to tackled moped enabled criminality, including robbery and theft of motor vehicles. Includes enhance police/partnership tactics as well as the use of ‘Achilles Heel’ tactics to disrupt and suppress offenders.

Partnership Action

- . Robbery Unit – Local police team proactively committed to tackling street crime including robbery and moped enabled crime including theft person (snatch) offences, as well as street based violence.
- Knife Crime Action Plan: Co-produced plan to tackled knife and youth crime, with the key strands being Prepare, Pursue, Prevent and Protect. Consultation of youth and key community stakeholders continues and will form a key strand of the borough plan.
- Bridge Renewal Trust Youth Summit : Event took place 17th March, which successfully engaged with a number of young people and members of the local community. Learning from this will inform the co-produced knife crime action plan, which is currently in development.
- Integrated Gangs Unit (IGU): Working in partnership with other service areas (e.g. CYPS, schools etc.) to further develop prevention activities with transitional age young people and to contribute to whole system approaches to reduced risks.
- Engagement tactics: Police and Integrated Gangs Unit (IGU) have increased the focus of their schools’ work and engagement on weapons and gang-related activity.
- Prison Workshop – ‘Through My Eyes’: Develop by the IGU, working directly with gang elders based in Pentonville prison in order to reduce their likelihood of re-offending and to also build community capacity and act as positive influencers in Haringey

Current initiatives



- **Project Future:** (Prevention, Diversion, Health): A Trauma Based project working with the most vulnerable/violent young men in the east of the borough currently involved with gangs/SYV or are at risk of becoming involved.
- **Integrated Offender Management:** As part of a co-located team based in wood green custody suite, the multidisciplinary team manages young people who are either involved in, or at risk of SYV. The team works on a 1-2-1 basis or in conjunction with other professionals i.e. team around the school
- **OASIS Hadley:** (Victims, Prevention and Diversion): This is a victim's based service working directly with victims of violence and CSE who present at North Middlesex A&E. Key to "teachable moment" the objective is to offer those who may be involved in SYV/Gangs lifestyles support and gang exit opportunities
- **London Gangs Exit:** (intervention, diversion, rehabilitation): MOPAC funded gangs exit intervention for individuals who need to be moved to alternative locations to support gangs exit.
- **Cross Borough Work:** (enforcement, prevention, intelligence mapping): LBOH works closely with LB Enfield to share intelligence, managing individuals involved in cross boarder activities and violence.

Current initiatives

- **Enforcement:** Criminal Behaviour Orders, Electronic Tagging to deter and prevent known offenders from their activities.
- **Transitions groups which feature Knife Crime and wider community safety** issues with Year 6 students are in development to be rolled out across 24 primary schools in the borough in the borough.
- **Street Doctors** is a national network of medical volunteers who utilise their skills to reduce Youth violence. This provision is being provided by Youth Justice from April 2018. Street Doctors change the lives of young people by giving them skills to deliver lifesaving first aid, using first aid also as a tool to educate young people to change their attitude towards violence.,
- **Weapons awareness groups** are an offer of provision in Youth Justice. This course is run several times a year as part of a programme for young offenders known to the Youth Justice Team
- **Community weapon sweeps** – Community led weapon sweeps undertaken with the community with partners

Current Initiatives

- **Specialist workers.** E.g. Serious Youth Violence Worker based in Youth Justice Service, Young Persons Advocates based in Children's Services, YJS, Community Safety
- **Team Around the School:** (prevention, diversion, education, intervention, 1-1 work, family work): LBH led multi-agency offer to schools who concerns about either gangs, CSE or SYV.
- **A school pilot project in partnership between EH Youth and Project Futures, (part of MAC-UK),** facilitated by Clinical Psychologists and developed with young people, to challenge young people's thought process and decision making to carry a knife. The schools identified to participate are St Paul's and All Hallows Primary (Year 6) and Harris Academy (a secondary Year group tbc). Both schools are holding focus groups to develop tailor made packages and the programmes are due to start in Feb.
- **A 6 week MOJ knife crime/SYV programme, 'Aspire Higher'** is confirmed in partnership with The Safety Box, EH, YJ and the Octagon Academy. A hard-hitting programme, facilitated by ex-gang members aimed at violence reduction and supporting personal development.
- **Community Safety Pilots – Development of focussed partnership pilots through the CSP**

Strategic Developments

- Serious Youth Violence a key priority in the developing Borough Plan
- Violence, vulnerability & exploitation are key objectives in the Community Safety Strategy
- Haringey & Enfield locally developed serious violence reduction partnership plan
- Young People at Risk Strategy focus on earlier intervention to reduce knife crime
- Youth Justice Service plan prioritise reducing offending of young people
- Young London Fund application outcomes due for announcement in late October/early November 2018